

# CERTIFICATE

CERTIFICATE OF DEVICE COMPATIBILITY VIA BLUETOOTH 4.0

We hereby state that Escort Monitoring Systems, Russia, and the international terminals manufacturer

## RESEARCH AND PRODUCTION ENTERPRISE «DISK SYSTEMS»

have jointly conducted internal laboratory tests and implemented direct data exchange between the wireless sensor TD-BLE and the terminal Bitrek. The tests were carried out in laboratories of RPE «Disk Systems» and Escort Monitoring Systems (November 26, 2020).

We ratify that the fuel sensor TD-BLE is compatible with the Bitrek brand terminal **BI 868 TREK Q BLE** in terms of electrical and measurement characteristics.

The functionality is supported with firmware version 1.20 and newer for the TD-BLE.  
For instructions on how to connect and configure the certificate, see the Appendix to this certificate.



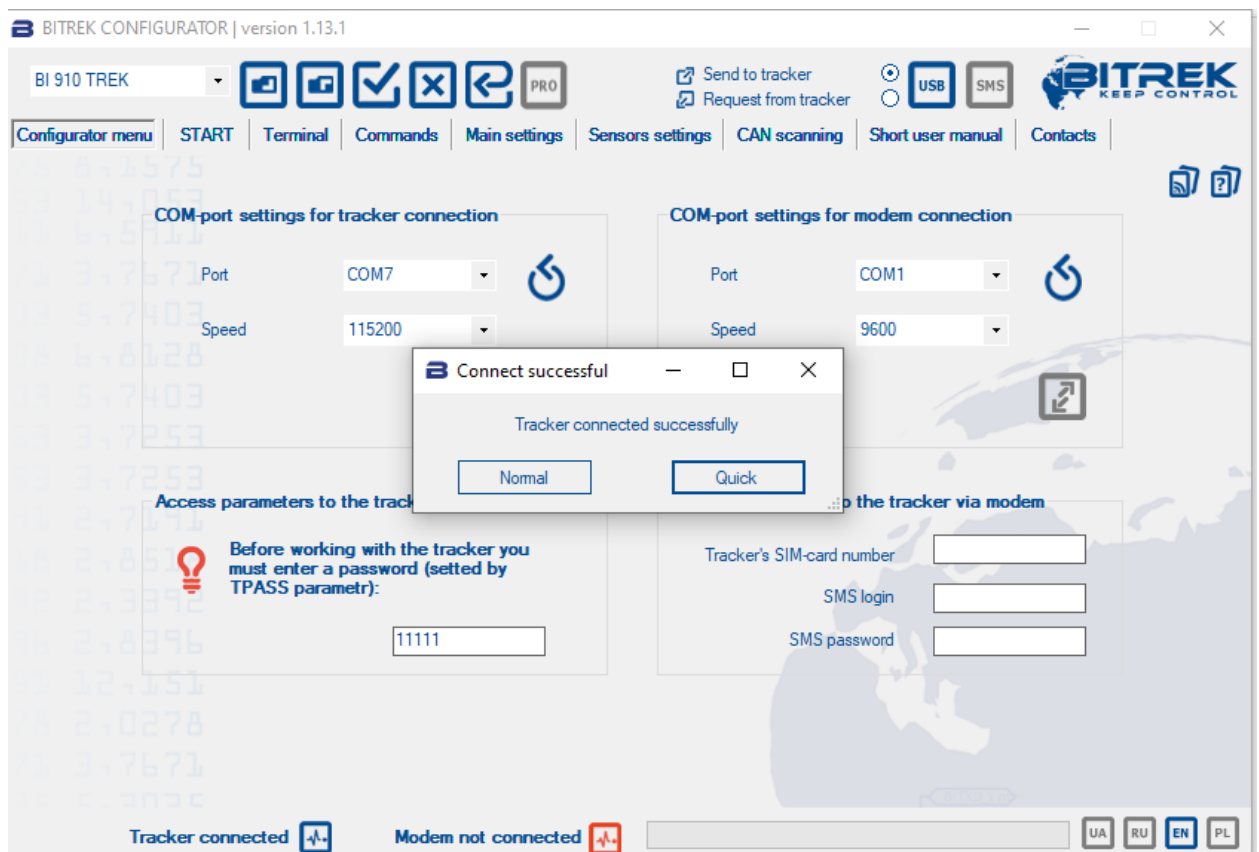
Chief of Escort Monitoring Systems  
Technical Support **Rinat Gafurov**



Technical Director  
**Kachan Sergey Viktorovich**

To connect TD BLE to Bitrek terminals, you need Bitrek Configurator and Bitrek Ble Scanner. Запустите конфигуратор

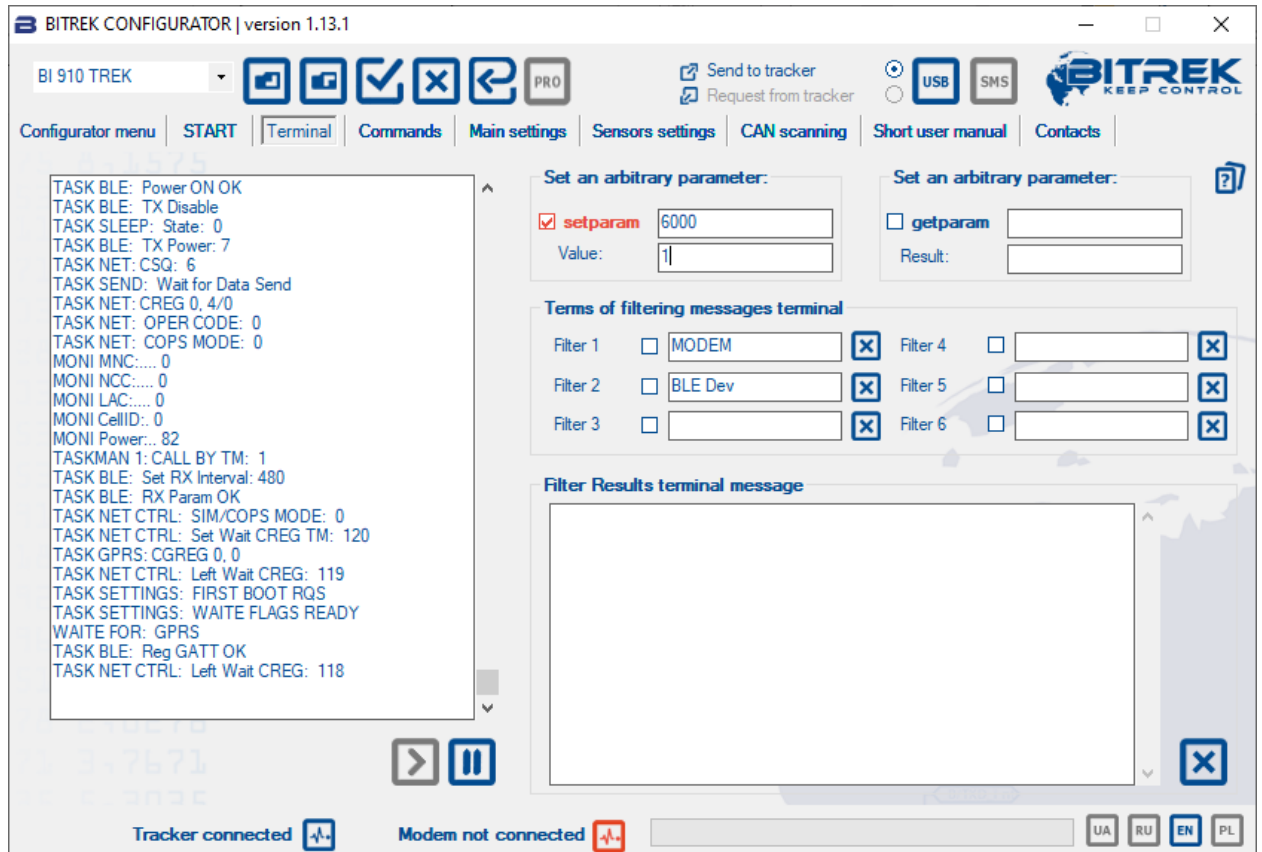
1. Select COM - Port
2. Set the speed to 115200
3. Connect to terminal
4. Enter password
5. Next, select "Normal" operating mode.



6. In the “setparam” field enter 6000

7. Set the value to 1

This activates Bluetooth



Next you need Bitrek Ble Scanner

1. Select COM - Port
2. Press the Start button to start scanning
3. Select a sensor
4. Select Escort Presets
5. Select options from the menu below
6. Click Set BLE Device